

FIF-10 USB PROGRAMMING INTERFACE

The **FIF-10** is the Interface Unit which allows cloning of channel data to Vertex Standard transceivers,* and/or re-writing of the firmware on some Vertex Standard transceivers,* using the USB port of a personal computer.

※: Check with your Vertex Standard Dealer for applicable models.

OPERATING SYSTEM REQUIREMENTS

Microsoft® Windows® 2000 or Windows® XP

PACKING LIST

FIF-10 Interface Unit

USB Cable

CD-ROM (Includes the Driver File and Operating Manual)

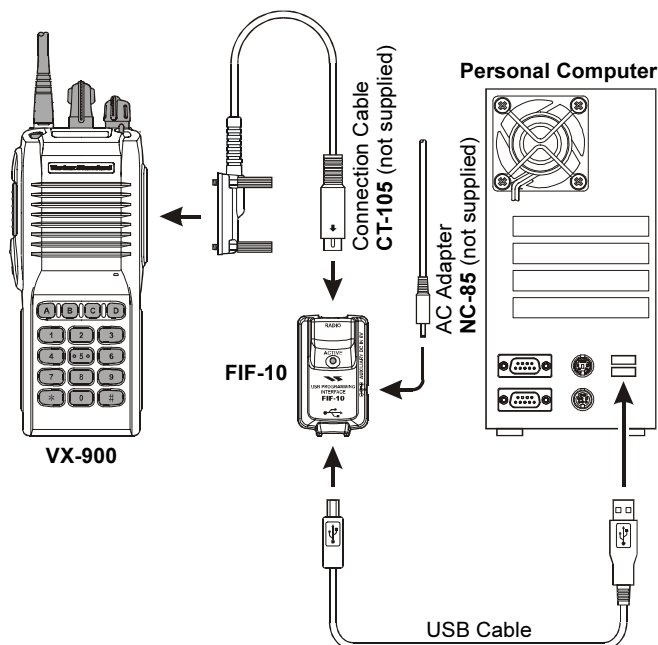
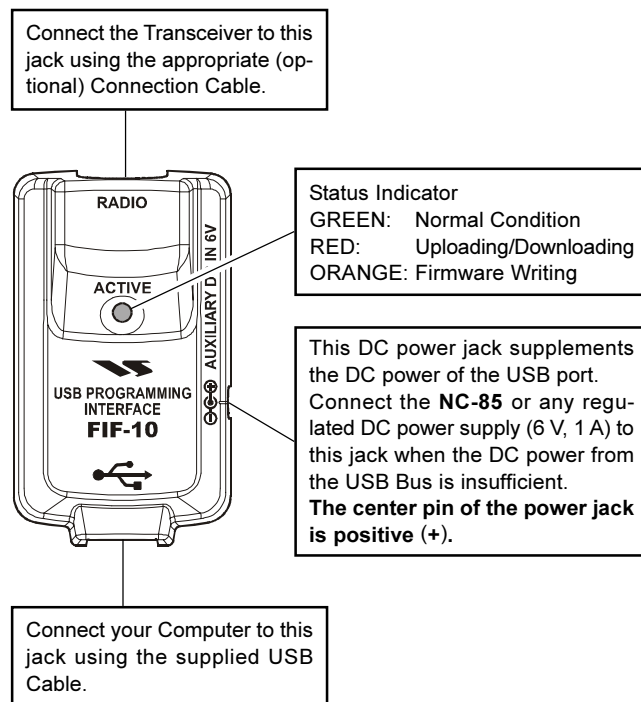
OPERATION

- ☐ **Log on to the computer using the "Administrator" account.** If you do not know how to change the account to "Administrator," please consult your computer system administrator.
- ☐ Connect the supplied USB Cable between the **FIF-10** and your computer, then connect the appropriate Connection Cable (option) between the **FIF-10** and the transceiver.
- ☐ When turning on your computer for the time after connecting the **FIF-10** to your computer, the computer will ask for the FIF-10 driver. Please see page 2 and 3 regarding driver installation.
Confirm the computer's communication port which detects the **FIF-10**. Describe details on the page 4 and 5.
- ☐ Turn on the transceiver (the **VX-600/-800/-900**'s Firmware can be re-written while the radio is turned off).
- ☐ Execute the cloning/writing software (for example, "CE39"). If this is the first time you have executed the programming/writing software on this computer after installing the **FIF-10** USB Interface, check the programming/writing software's "CONFIGURE" parameter, to be sure that the communication port of the programming/writing software matches that set for the **FIF-10**. See page 6 for details.

Note: When the DC power from the USB Bus is insufficient, connect the **NC-85** or any regulated DC power supply (6 V, 1 A) to the DC power jack of the **FIF-10**. Be sure to use the correct polarity when connecting the regulated DC power supply; **the center pin of the power jack is positive (+)**.

OPTIONS

- CT-104** Connection Cable with 6-pin Modular Jack
(for the **VX-4100/-4200** etc.)
- CT-105** Connection Cable with 14-pin Universal Connector
(for the **VX-600/-800/-900** etc.)
- CT-106** Connection Cable 4-conductor Mini-phone Jack
(for the **VX-160(E)/-180(E)/-210** etc.)
- NC-85** AC Adapter



TYPICAL SETUP FOR THE FIF-10

VERTEX STANDARD CO., LTD.
4-8-8 Nakameguro, Meguro-Ku, Tokyo 153-8644, Japan
VERTEX STANDARD
US Headquarters
10900 Walker Street, Cypress, CA 90630, U.S.A.

INSTALLATION PROCEDURE FOR THE FIF-10 DRIVER (Microsoft® Windows® 2000)

1. Click the *left* mouse button on the “Next >” button.



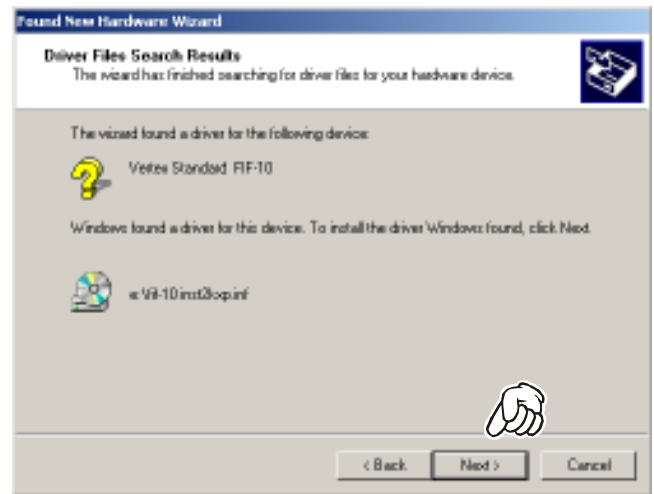
2. Select “Search for a suitable driver for my device,” then click the *left* mouse button on the “Next >” button.



3. Select “CD-ROM drives,” then click the *left* mouse button on the “Next >” button.



4. Click the *left* mouse button on the “Next >” button.



5. Click the *left* mouse button on the “Finish” button.



INSTALLATION PROCEDURE FOR THE FIF-10 DRIVER (Microsoft® Windows® XP)

1. Select “Install the software automatically,” then click the *left* mouse button on the “Next >” button.



2. Click the *left* mouse button on the “Continue Anyway” button.

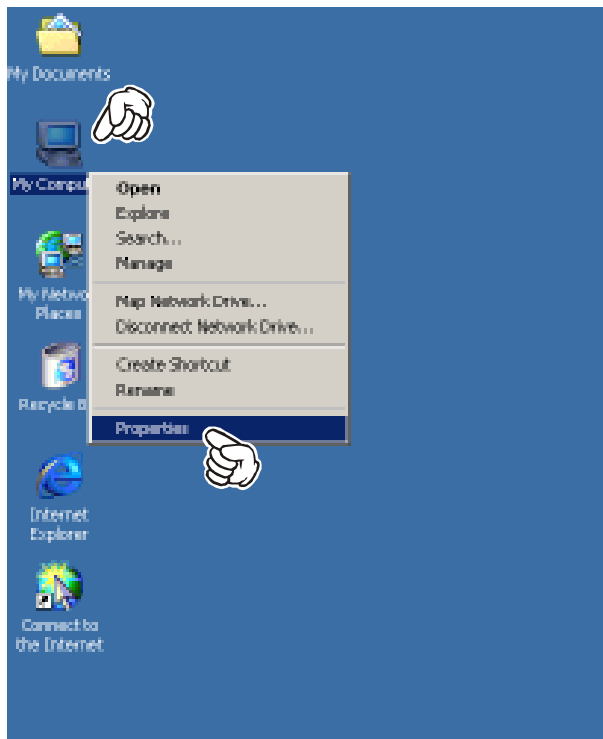


3. Click the *left* mouse button on the “Finish” button.

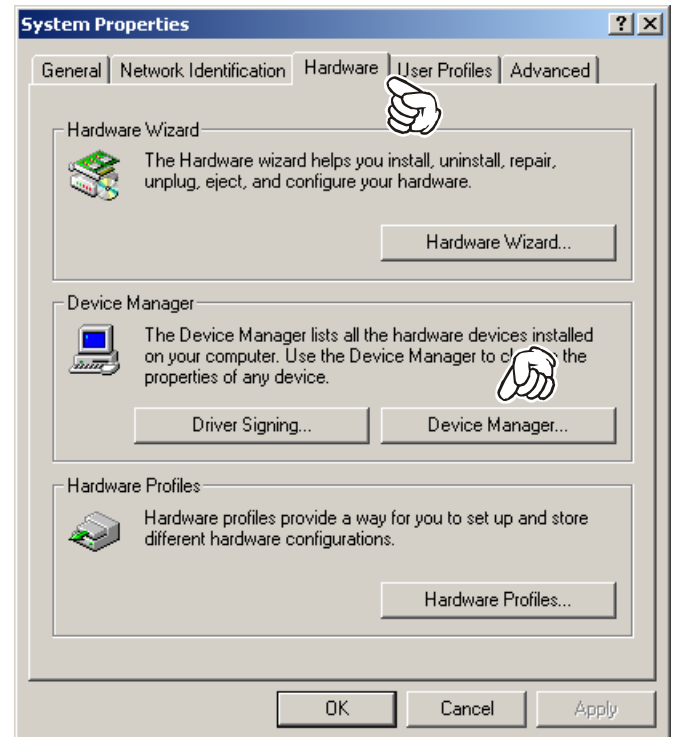


CONFIRMING THE COMPUTER'S COMMUNICATION PORT (Microsoft® Windows® 2000)

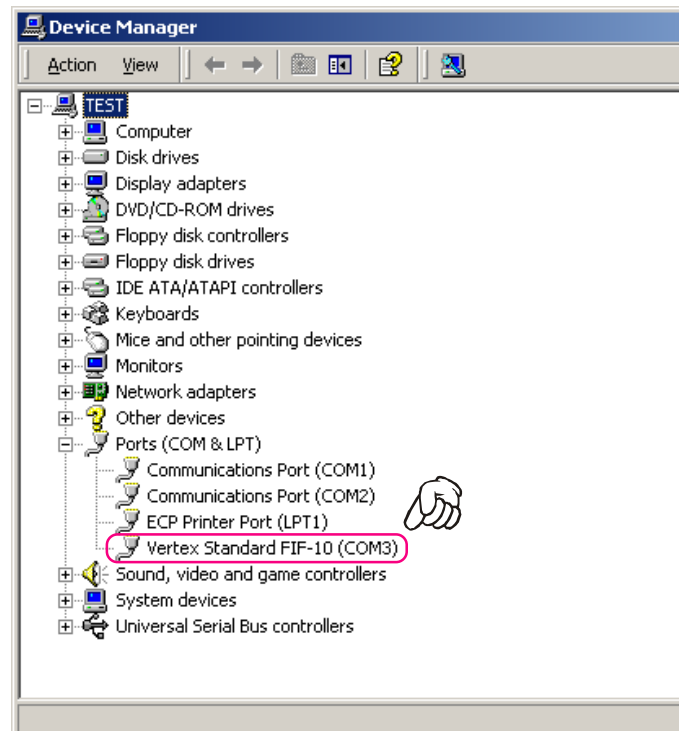
1. Click the *right* mouse button on the “**My Computer**” icon on the desktop, then click the left mouse button on the “**Properties**” item to open the “**System Properties**” window.



2. Click the *left* mouse button on the “**Hardware**” Folder, then click the *left* mouse button on the “**Device Manager**” Button to open the “**Device Manager**” window.

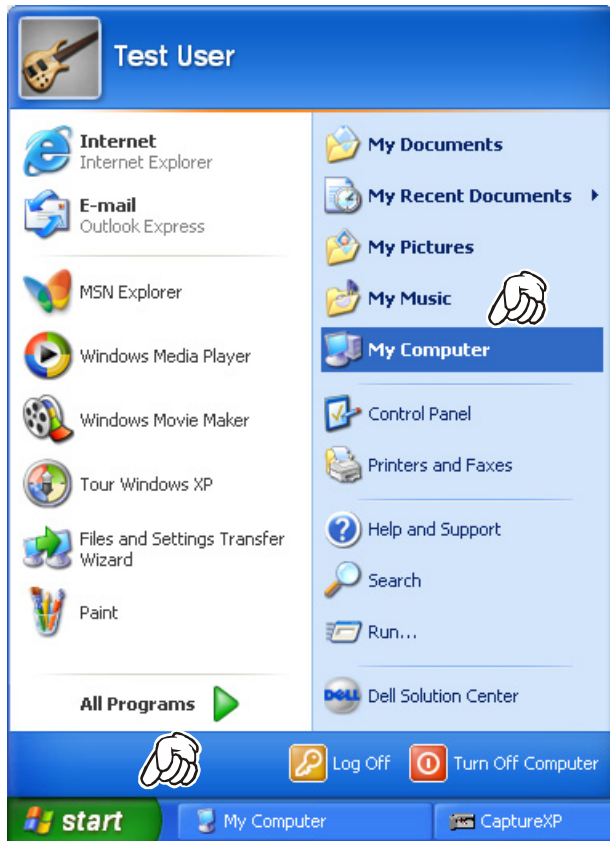


4. Confirm the computer's communication port which detects the **FIF-10**.



CONFIRMING THE COMPUTER'S COMMUNICATION PORT (Microsoft® Windows® XP)

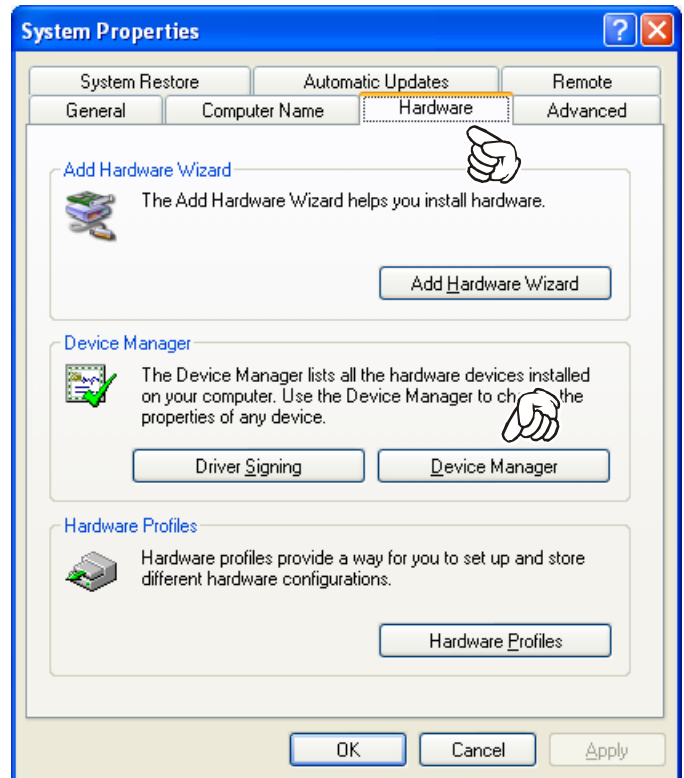
1. Click the *left* mouse button on the “**start**” button, then click the *left* mouse button on the “**My Computer**” item.



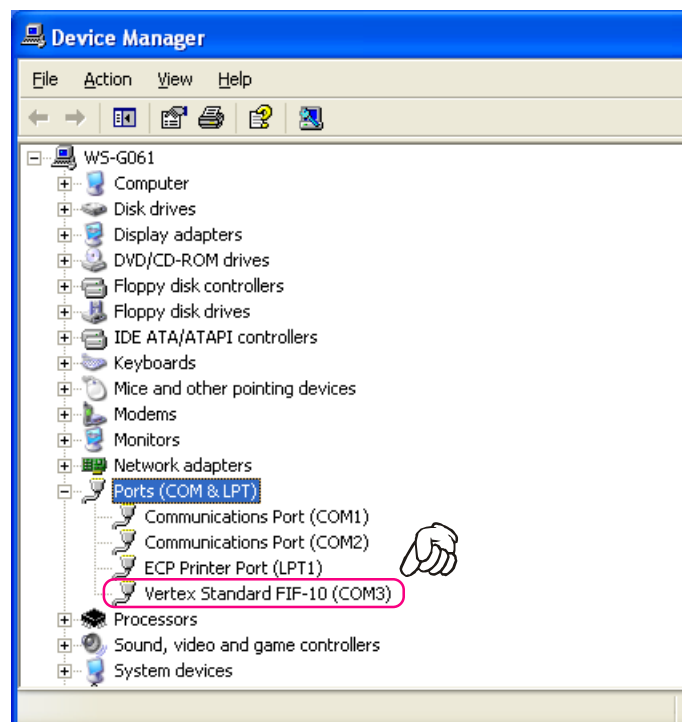
2. Click the *left* mouse button on “**View system information**” to open the “**System Properties**” window.



3. Click the *left* mouse button on the “**Hardware**” Folder, then click the *left* mouse button on the “**Device Manager**” button to open the “**Device Manager**” window.

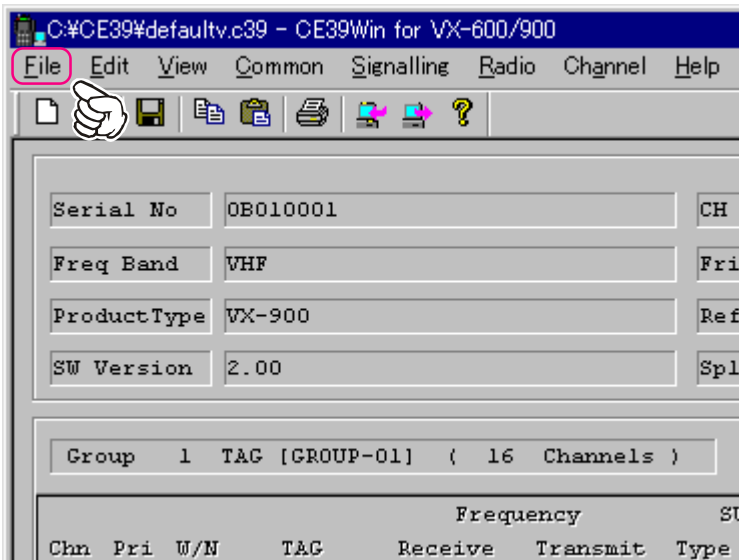


4. Confirm the computer's communication port which detects the **FIF-10**.

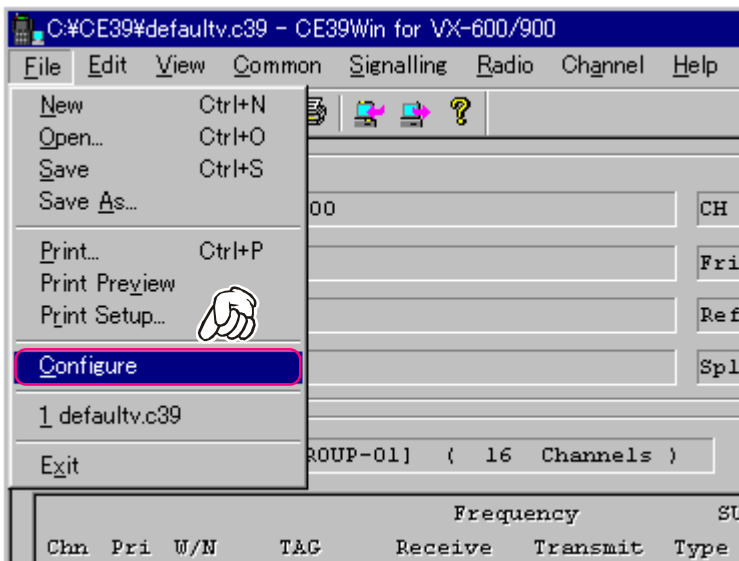


“CONFIGURE” PARAMETER SETTING PROCEDURE (EXAMPLE: “CE39”)

1. Click the *left* mouse button on the “File” parameter.



2. Click the *left* mouse button on the “Configure” item to open the “Configure” window.



3. Select the communication port which is detecting the FIF-10, then click the *left* mouse button on the “OK” button.

